

EPRO

HORIZONTAL MULTISTAGE PUMPS

Stainless steel

-  Clean water
-  Domestic use
-  Civil use
-  Industrial use



EHSFT



EHS



EHSF

INSTALLATIONS AND USE

- . For water supply
- . For clean liquids, without abrasives, which are non-aggressive to the pump materials
- . For domestic use, for civil and industrial applications, for garden use and irrigation

PERFORMANCE RANGE

- . Flow rate up to 28m³/h
- . Head up to 60m

OPERATING CONDITIONS

- . Liquid temperature from -20°C to 100°C
- . Ambient temperature up to +40°C
- . Max. Working pressure 10bar
- . Continuous duty

OPTIONS AVAILABLE ON REQUEST

- . Special mechanical seal
- . Other voltages or 60Hz frequency
- . Higher or lower liquid temperature

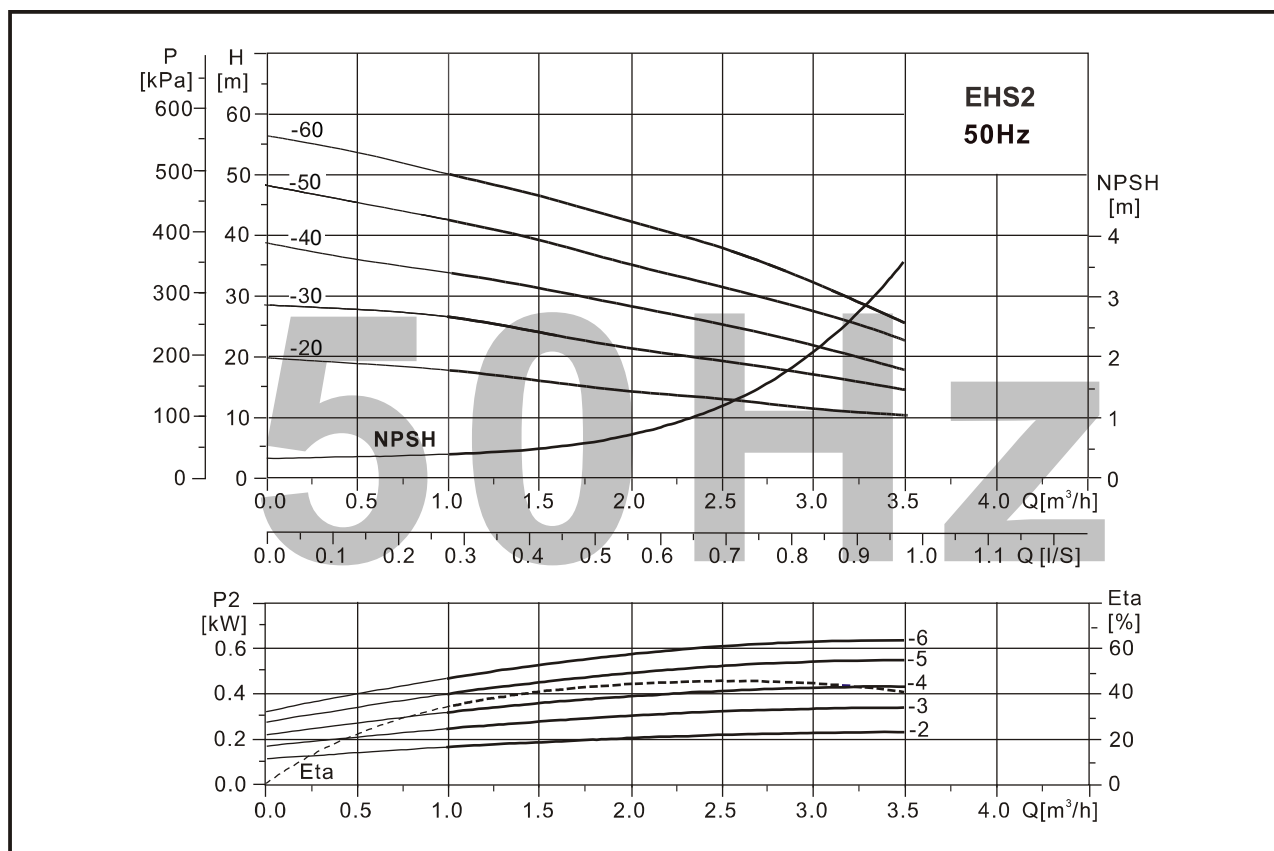
ELECTRIC MOTOR

- . Two-pole induction motor
- . Standard voltage, 50Hz
 - 1x220V-240V
 - 3x220V-240V
 - 3x380V-415V
- . Single phase motor max 2.2kW
- . Insulation class F
- . Protection IP55

COMPONENT MATERIALS

Pump body	Stainless steel AISI304
Diffuser	Stainless steel AISI304
Impeller	Stainless steel AISI 304
Support	Aluminum
Motor case	Aluminum
Shaft	Stainless steel AISI 304
Mechanical seal	Impregnated graphite/Silicon carbide/Viton
EHS/EHSF	
Suction/Discharge mounting	Stainless steel AISI304
EHSFT	
Suction/Discharge mounting	Cast iron

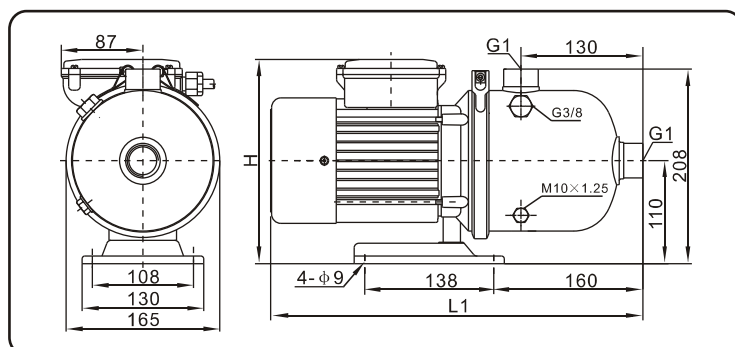
Perfromance table



Perfromance table

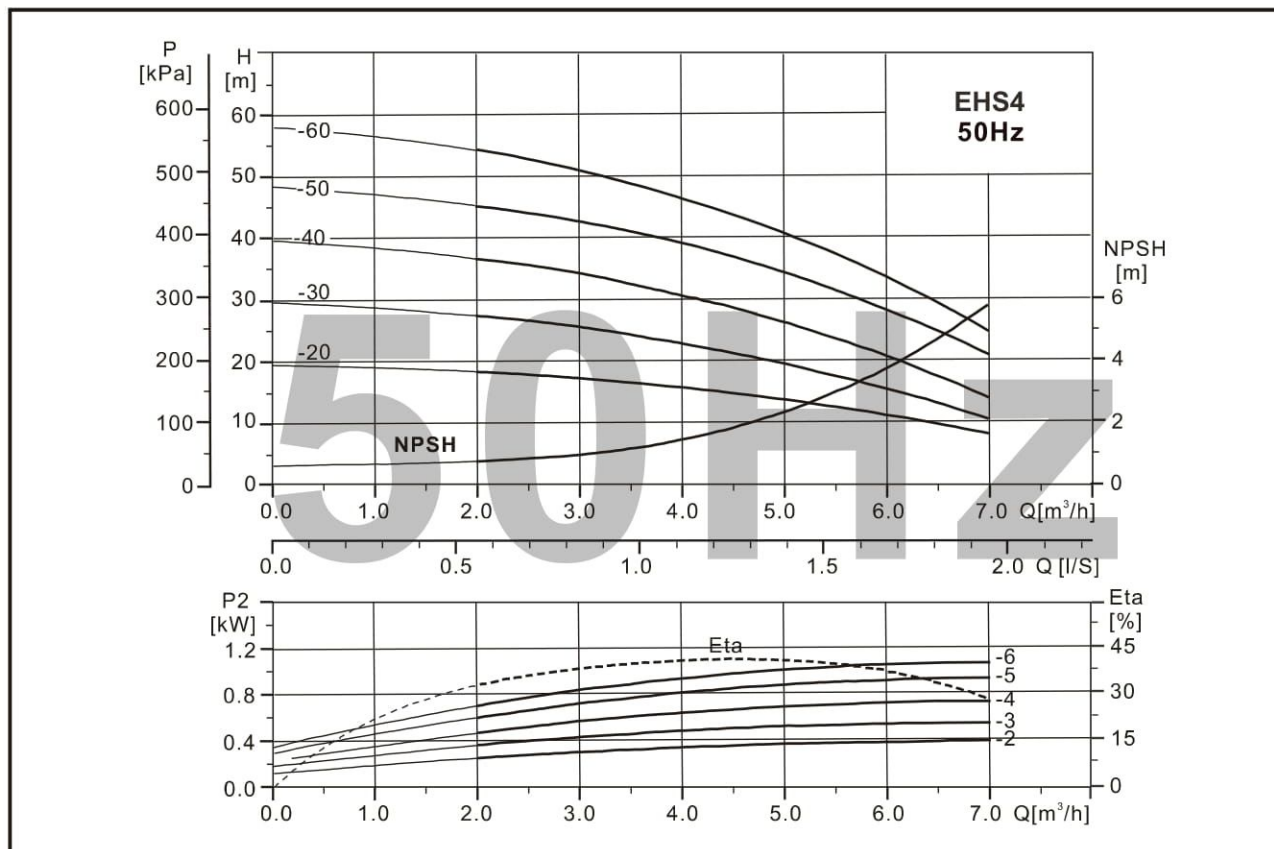
Model Single Phase	Model Three Phase	Driving motor P ₂ (KW)	Q (m³/h)	1.0	1.5	2.0	2.5	3.0	3.5
EHS2-20(S)	EHS2-20(T)	0.37	H (m)	18	16	14	13	11	10
EHS2-30(S)	EHS2-30(T)	0.37		27	24	21	20	17	14
EHS2-40(S)	EHS2-40(T)	0.55		35	32	28	26	23	17
EHS2-50(S)	EHS2-50(T)	0.55		43	40	35	33	28	22
EHS2-60(S)	EHS2-60(T)	0.75		50	48	42	38	32	25

Installation sketch



Model	Dimensions(mm)				Weight (kg)
	Single Phase		Three Phase		
	L1	H	L1	H	
EHS2-20	400	217	400	214	8
EHS2-30	400	217	400	214	8.5
EHS2-40	400	217	400	214	9.5
EHS2-50	400	217	400	214	11
EHS2-60	400	217	400	214	12

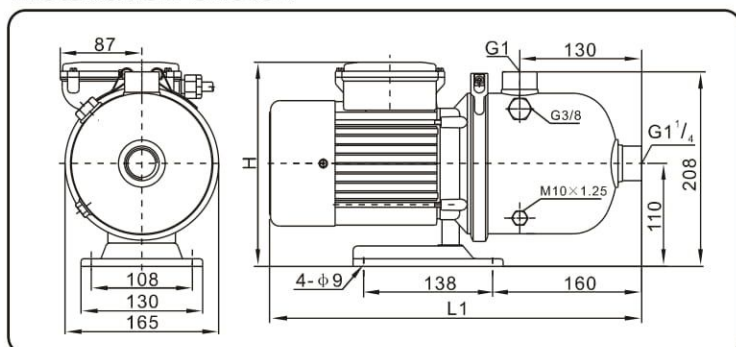
Perfromance table



Perfromance table

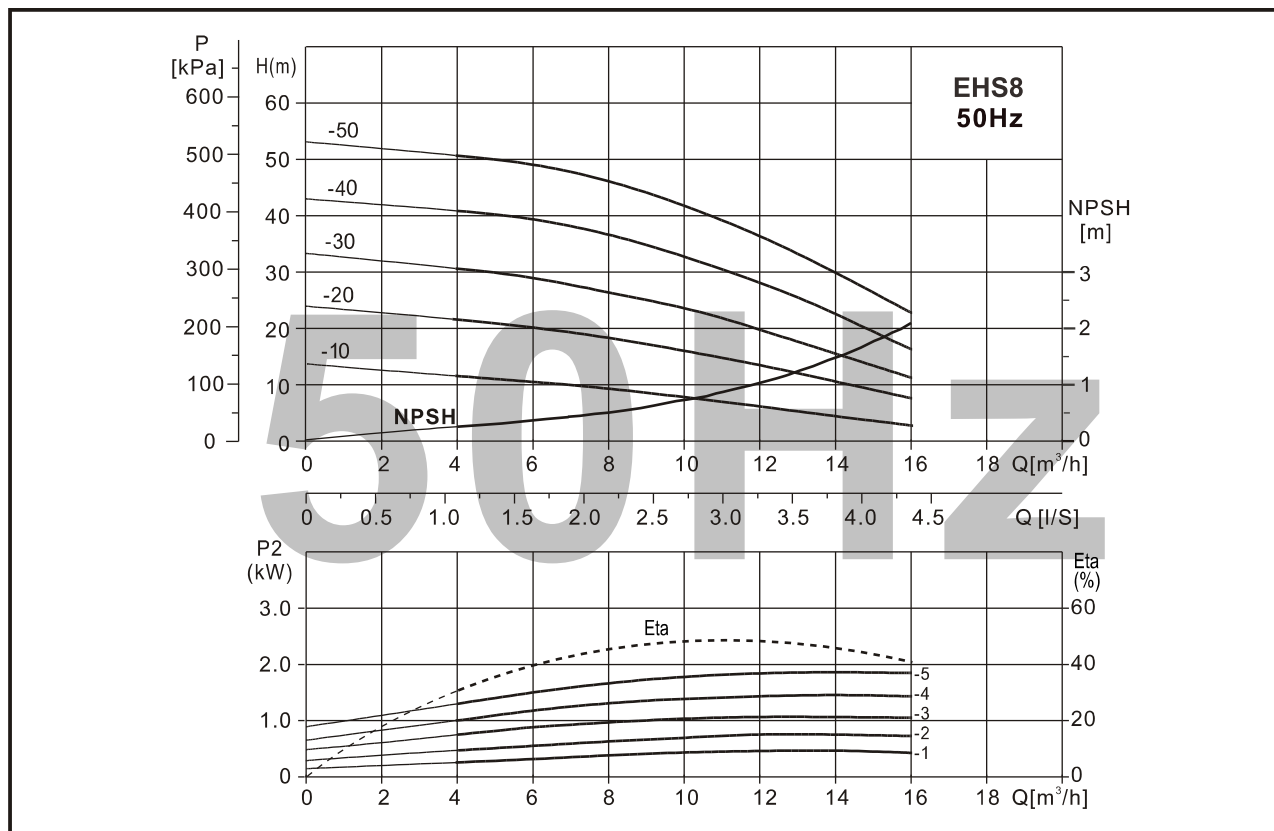
Model Single Phase	Model Three Phase	Driving motor P ₂ (KW)	Q (m³/h)	2.0	3.0	4.0	5.0	6.0	7.0
EHS4-20(S)	EHS4-20(T)	0.55	H (m)	18	16	15	13	10	7
EHS4-30(S)	EHS4-30(T)	0.75		27	25	22	19	15	10
EHS4-40(S)	EHS4-40(T)	0.75		36	33	30	26	20	13
EHS4-50(S)	EHS4-50(T)	1.0		44	41	38	32	26	20
EHS4-60(S)	EHS4-60(T)	1.1		53	50	45	40	33	24

Installation sketch



Model	Dimensions(mm)				Weight (kg)
	Single Phase		Three Phase		
	L1	H	L1	H	
EHS4-20	400	217	400	214	9.7
EHS4-30	400	217	400	214	11
EHS4-40	400	217	400	214	11.5
EHS4-50	400	217	400	214	12.5
EHS4-60	400	217	400	214	13.5

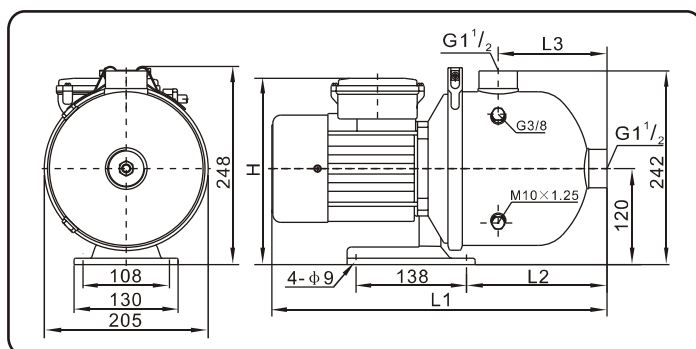
Perfromance table



Perfromance table

Model Single Phase	Model Three Phase	Driving motor P ₂ (KW)	Q (m ³ /h)	4.0	6.0	8.0	10	12	14	16
EHS8-10(S)	EHS8-10(T)	0.55	H (m)	11	10	9	8	7	6	5
EHS8-20(S)	EHS8-20(T)	0.75		22	20	19	18	13	11	8
EHS8-30(S)	EHS8-30(T)	1.1		31	29	26	24	20	16	11
EHS8-40(S)	EHS8-40(T)	1.5		41	39	37	33	28	23	17
EHS8-50(S)	EHS8-50(T)	2.2		51	49	46.5	42	37	30	23

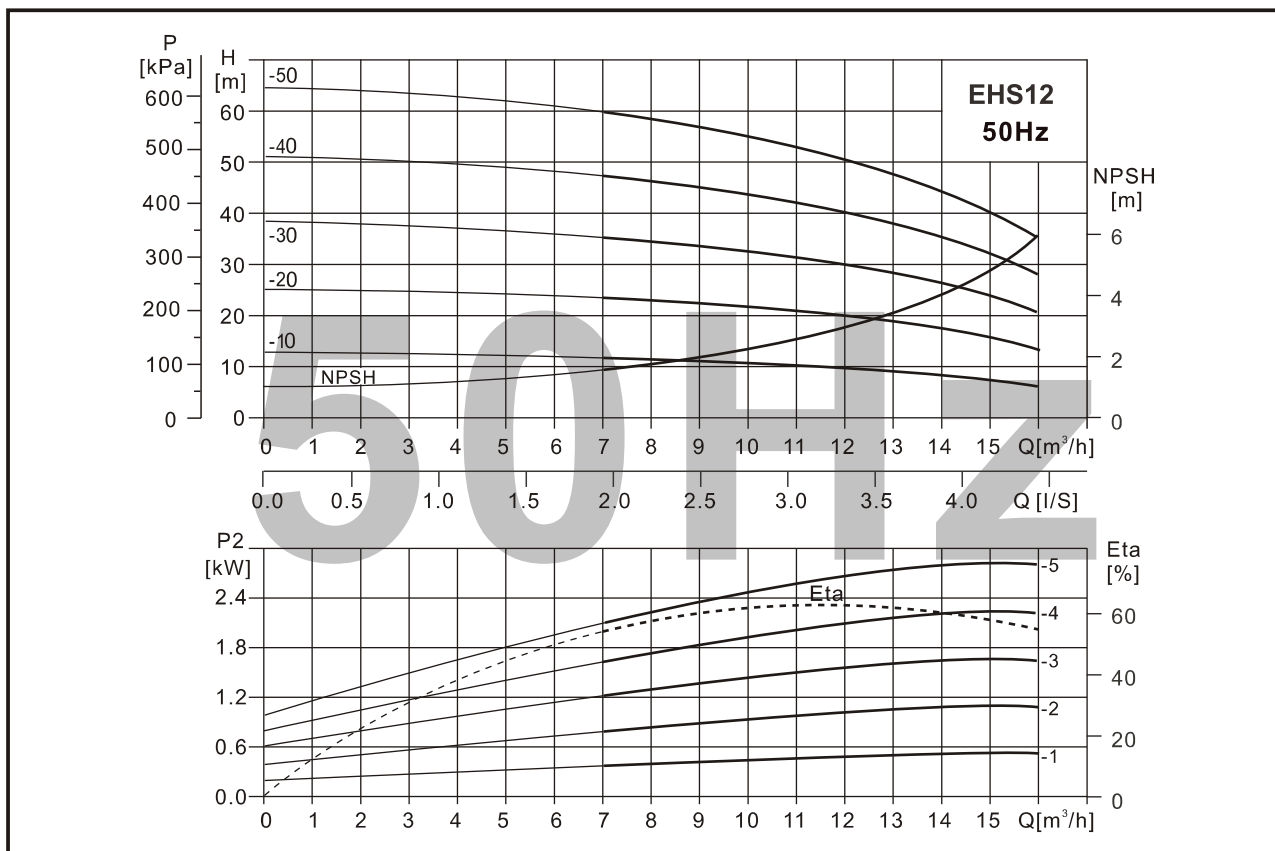
Installation sketch



pump cover with G2 inlet/outlet is available

Model	Dimensions(mm)								Weight (kg)
	Single Phase				Three Phase				
	L1	L2	L3	H	L1	L2	L3	H	
EHS8-10	425	180	139	227	425	180	139	224	10
EHS8-20	425	180	139	227	425	180	139	224	11.5
EHS8-30	455	180	139	235	455	180	139	232	13
EHS8-40	455	180	139	235	455	180	139	232	16
EHS8-50	566	246	205	239	521	246	205	232	25

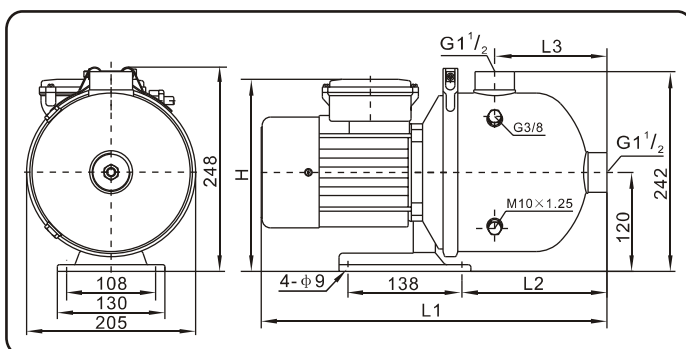
Performance table



Performance table

Model Single Phase	Model Three Phase	Driving motor P ₂ (KW)	Q (m³/h)	7.0	8.0	9.0	10	11	12	13	14	15	16
EHS12-10(S)	EHS12-10(T)	0.75	H (m)	12	11.5	11	10.5	10	9.5	9	8	7	6
EHS12-20(S)	EHS12-20(T)	1.1		23	22.5	22	21	20.5	19.5	18.5	17	15.5	13
EHS12-30(S)	EHS12-30(T)	1.85		35	34.5	33.5	32.5	31	29.5	28	26	23.5	20
EHS12-40(S)	EHS12-40(T)	2.2		47	46	45	43.5	41.5	39.5	37.5	35	31.5	27.5
EHS12-50(S)	EHS12-50(T)	3.0		60	58	56.5	55	52.5	50	47	44	40	35

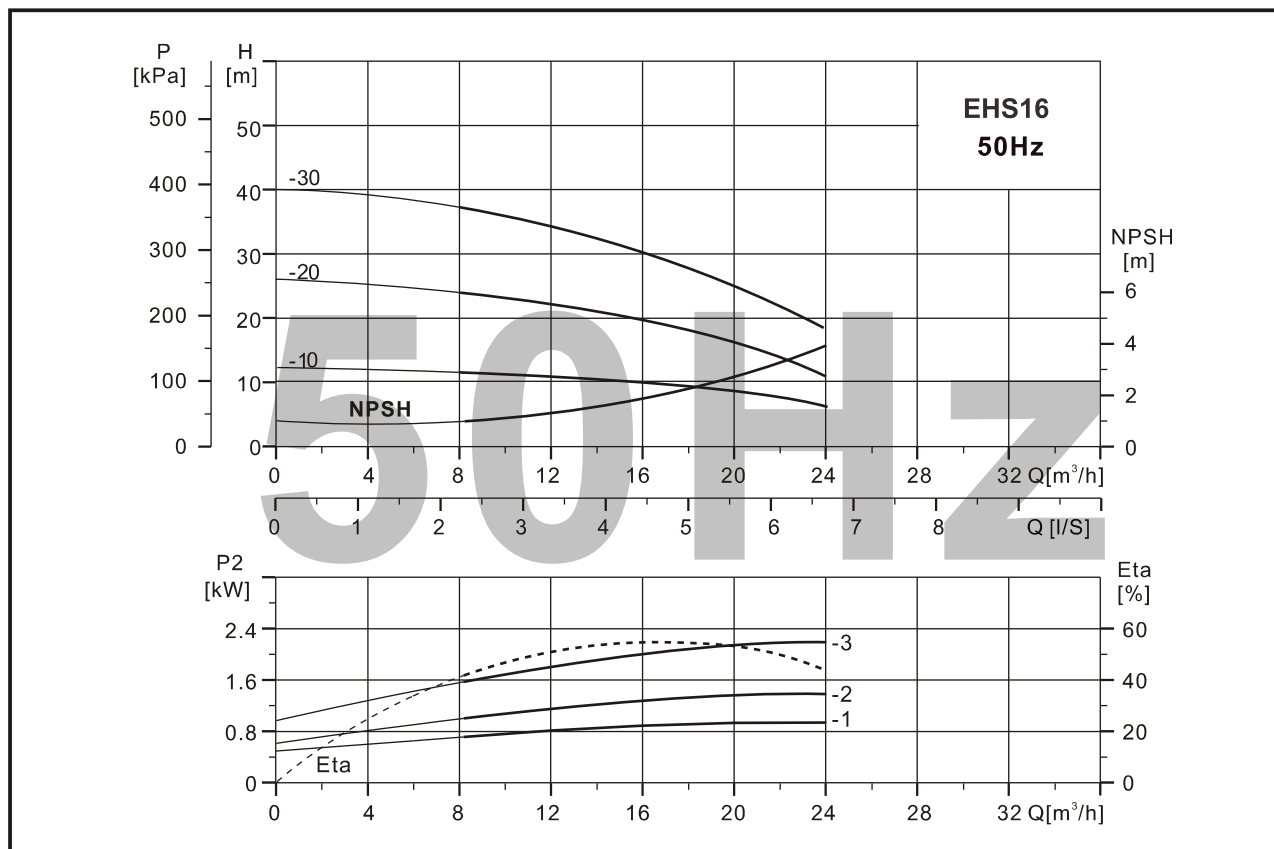
Installation sketch



Model	Dimensions(mm)								Weight (kg)
	Single Phase				Three Phase				
	L1	L2	L3	H	L1	L2	L3	H	
EHS12-10	425	180	139	227	425	180	139	224	11
EHS12-20	458	180	139	235	455	180	139	232	13
EHS12-30	500	180	139	239	455	180	139	232	23
EHS12-40	500	180	139	239	455	180	139	232	24
EHS12-50	—	—	—	—	583	246	205	239	27

Pump cover with G2 inlet/outlet is available

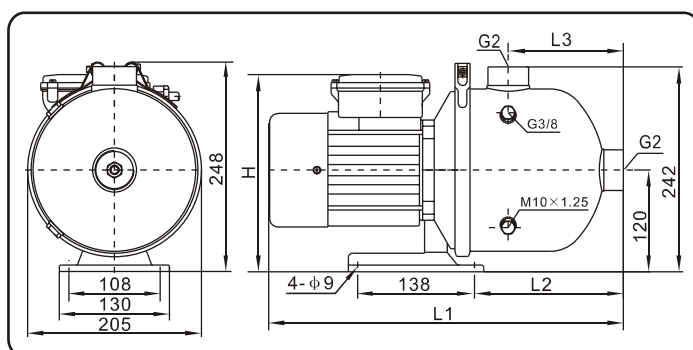
Performance table



Performance table

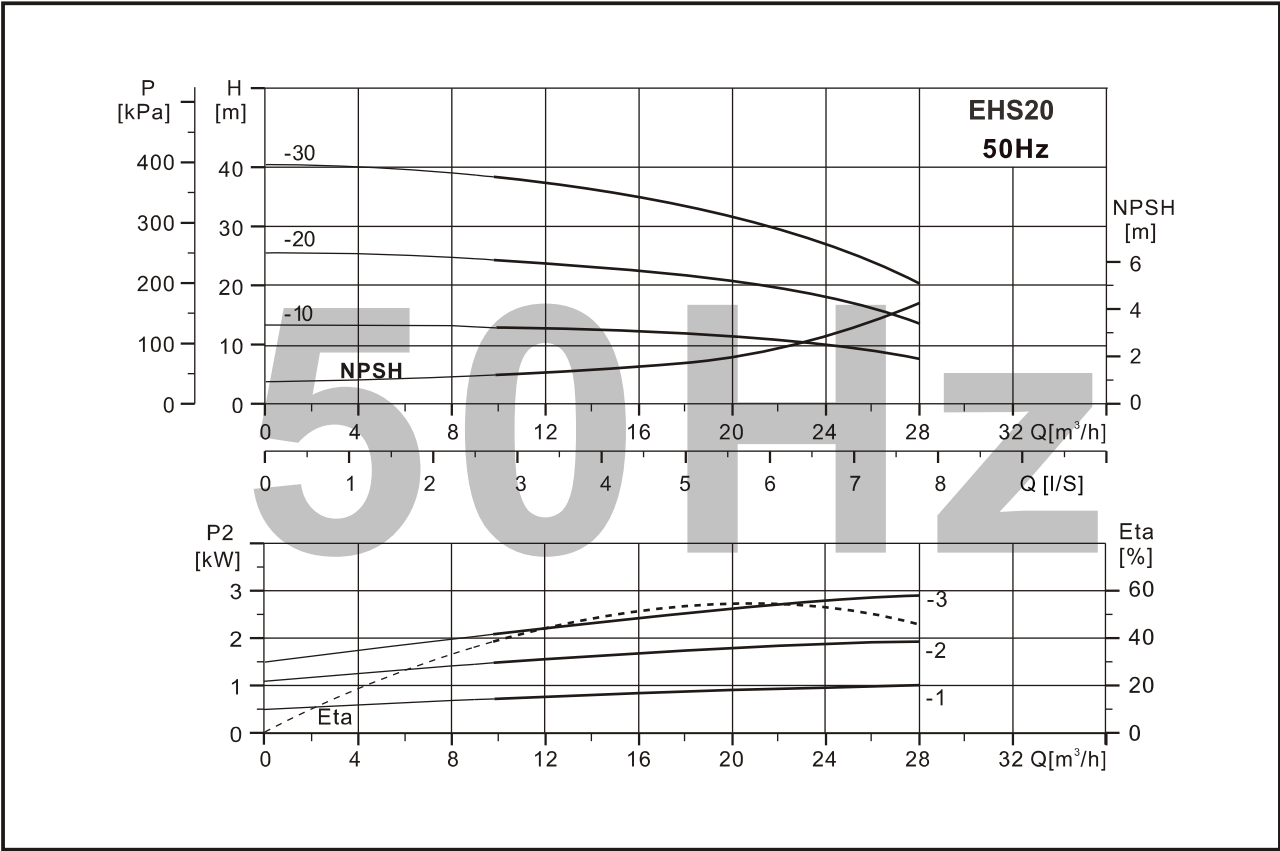
Model Single Phase	Model Three Phase	Driving motor P ₂ (KW)	Q (m³/h)	8	10	12	14	16	18	20	22	24
EHS16-10(S)	EHS16-10(T)	1.0	H (m)	12	11.5	11	10.5	10	9	8	7	6
EHS16-20(S)	EHS16-20(T)	1.5		24	23	22	21	20	19	16	14	12
EHS16-30(S)	EHS16-30(T)	2.2		38	36	34	33	30	28	26	23	20

Installation sketch



Model	Dimensions(mm)								Weight (kg)
	Single Phase				Three Phase				
	L1	L2	L3	H	L1	L2	L3	H	
EHS16-10	425	175	136	245	425	175	136	224	13.5
EHS16-20	455	175	136	254	455	175	136	232	17
EHS16-30	520	201	162	239	480	201	162	232	23

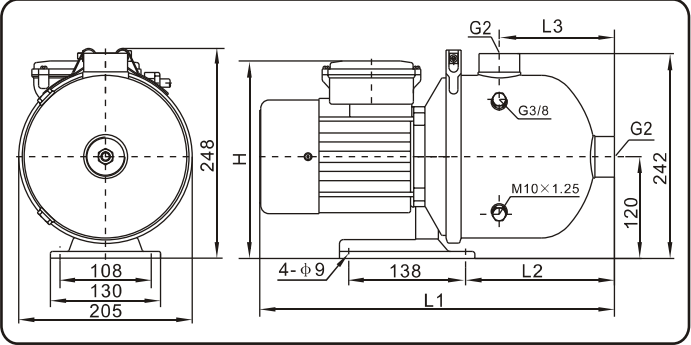
Perfromance table



Performance table

Model Single Phase	Model Three Phase	Driving motor P ₂ (KW)	Q (m³/h)	10	12	14	16	18	20	22	24	26	28
EHS20-10(S)	EHS20-10(T)	1.0	H (m)	13	12.5	12	11.5	11	10.5	10	9	8.5	7.5
EHS20-20(S)	EHS20-20(T)	1.85		25	24	23	22	21	20	18	16	14	12
EHS20-30(S)	EHS20-30(T)	3.0		39	38	36	35	33	31.5	30	27	24	21

Installation sketch



Model	Dimensions(mm)								Weight (kg)
	Single Phase				Three Phase				
	L1	L2	L3	H	L1	L2	L3	H	
EHS20-10	425	175	136	245	425	175	136	224	20
EHS20-20	498	175	136	239	455	175	136	232	22
EHS20-30	—	—	—	—	540	201	162	239	25